

JCT Traffic Signal Symposium & Exhibition
Wednesday 12th & Thursday 13th September 2018
MOVA User Group 11th September 2018
Nottingham Conference Centre, Burton Street, Nottingham, NG1 4BU

Thank you for booking a place at this year's Symposium & Exhibition. This document provides joining instructions and other information relating to this event and the MOVA User Group which is being held the day before the Symposium.

Location

The Symposium is being held at Nottingham Conference Centre/Nottingham Trent University City Campus in the Newton Arkwright Buildings. A location plan and directions are attached.

By Road

Nottingham Conference Centre is in the perfect location for car travel and is well served by the motorway network. There is easy access from the M1, the A42/M42 link to the south-west of the city and the A1(M) to the east. For Sat Nav purposes, we recommend using postcode - NG1 4BU.

From the M1 North to NCC

Leave the M1 motorway at junction 26 and follow the A610 signposted to Nottingham. Continue through two roundabouts for approximately 4.3 miles and then take a slight left onto Talbot Street. Continue down Talbot Street for a further 0.5 miles and the Conference Centre will be located on the left.

From the M1 South to NCC

Leave the M1 motorway at junction 24 and follow the signs for the A453 to Nottingham City Centre.

Car Parking

Nottingham Conference Centre offer discounted parking at the nearby Q-Park Talbot Street Car Park, Stanley Place, NG1 5GG. The negotiated rates for parking for delegates attending the event are £7.50 for a day rate (up to 8 hrs) and £9.50 for 24 hours. **Payment is made at Nottingham Conference Centre Reception on the day of your event.** Please visit NCC reception with your parking token any time before 5.30pm to make payment. Visit NCC's car parking page for further details - <http://www.nottinghamconferencecentre.co.uk/location/venue-car-parking>.

Alternatively there are a number of other car parks in the city centre – www.nottinghamparking.co.uk.

Park and Ride

If you are attending the event as a day delegate, we recommend using one of Nottingham's Park and Ride services into the centre. There are several park and ride tram stops nearby (see below). The Phoenix Park park and ride site is close to Junction 26 of the M1, the Queen's Drive park and ride is located just off the A453 and the Forest park and ride site is near to the city centre. Further details are available at <http://www.nottinghamcity.gov.uk/parkandride>.

By Rail

Nottingham Conference Centre is just a 1 mile (approx.15 minute walk) from Nottingham Train Station. The Centre is easily accessible from the train station via public transport.

By Tram

The Royal Centre tram stop or Nottingham Trent University's own tram stop on Goldsmith Street are the nearest stops for the Conference Centre which is located in between the two and provides a convenient link from the park and ride sites, the railway station and Broadmarsh Bus Station - <http://www.thetram.net/maps-and-stops.aspx>

Nottingham Conference Centre have negotiated rates with NET (Nottingham Express Transit) for discounted tram travel. Please find your Tram voucher attached for discounted rates and how to use.

By Air

The closest airport to Nottingham is East Midlands Airport (EMA) which is 15 miles (24 kilometres) from Nottingham, taking less than 30 minutes by car or bus. Nottingham is well connected to the airport by the Skylink bus service that runs every 30 minutes and stops a few minutes' walk away from the venue. Taxis are also available at the airport.

Accommodation

If you have booked accommodation please check in at the Byron Residence Reception located at Hampden Street, Nottingham, NG1 4FW. Rooms are available from 15:00. Bedrooms must be vacated by 11:00 on the day of departure and keys must be returned to the Reception. Your flat kitchenette will have tea and coffee making facilities and your room will have towels and toiletries supplied. Free internet access is available in the accommodation by selecting the **Student.com Wi-Fi option** and creating an account (with an email address), which will enable you to connect to the internet. Reception staff will be on hand in Byron Reception 24 hours and you can contact them on 0115 9082270. There is no parking available at the accommodation.

MOVA User Group

The MOVA User Group is being held on Tuesday 11th September – the day before the Symposium. It will be held in Lecture Theatre 4 in the Newton Arkwright Building, upstairs on Level 1. This year it will start at the earlier time of **10:30** and refreshments will be served from 10:00 outside the room, alongside registration. Lunch will also be served in Newton Forum Level 1, a ticket for lunch will be provided at registration. The day is funded by Siemens, telent, Dynniq, TRL, PTV, ITS & Motus and JCT make no charge for organising the event.

Symposium

Both the Symposium presentations and the Exhibition will take place in the Newton Arkwright Building. Registration for the Symposium will take place at the JCT exhibition stand on Level 0.

The Symposium presentations will take place in Lecture Theatre 2 of the Newton Arkwright Building and will start at 09:30 prompt on Wednesday 12th and will finish at approximately 16:00 on Thursday 13th September.

At registration, you will be given your name badge and meal ticket if you have booked for evening meals. **Your name badge must be worn at all times** in order to gain entry to the Symposium, Exhibition, Refreshments and to take advantage of the sponsored events as well as being a way to identify yourself to on-site security personnel.

Exhibition

We are once again holding an exhibition featuring selected key companies in the traffic signals field. The exhibition can be viewed during registration, refreshment and lunch times on Level 0 of the Newton Arkwright Building. To encourage delegates to visit all the stands we will again be running a Treasure Hunt sponsored by the IHE. Completed treasure hunt forms should be returned to the IHE stand in the exhibition hall by the end of lunch on Thursday 13th.

Meals

There are a significant number of eating and drinking options in Nottingham so this year rather than organising an unofficial evening meal on the 10th of September we propose meeting in a pub close to the venue where there is food available for those who want it or alternative options nearby. A convenient meeting place would be the **"Slug and Lettuce": The Cornerhouse, Forman Street, Nottingham NG1 4DB**. We propose meeting at or around 7.00 pm. We will be in or around this pub until at least 8.30 but if the group has moved on and you want to catch up feel free to e-mail john.nightingale@jctconsultancy.co.uk and John will endeavour to reply. This element will not be sponsored so delegates will need to purchase their own food and drinks. **If you wish to join this group, please let us know as soon as possible** so that we can assess accurate numbers.

If you have booked Bed & Breakfast your breakfast will be served in the Old Chemistry Theatre on Tuesday and Central Gallery on Wednesday and Thursday mornings and is available from 07:30 – 09:00.

Lunch and refreshments at the Symposium are included during the day and will all be served in the Exhibition hall.

On Tuesday evening we will be holding a barbecue sponsored by Aldridge Traffic. This event will be held in The Old Chemistry Theatre and Courtyard. There will be a bar sponsored by JCT, Swarco, NAL, Dynniq, Coeval, TRP Products and ARTSM. The bar will be open from 19:00 and the food will be served from 19:30. On Wednesday evening Siemens will be sponsoring the Gala Dinner in Central Gallery. Again the bar will be sponsored by JCT, Swarco, NAL, Dynniq, Coeval, TRP Products and ARTSM.

Prior to the Gala Dinner a drinks reception hosted by Swarco will be held in Central Court from 18:30, dinner will be served upstairs at 19:00.

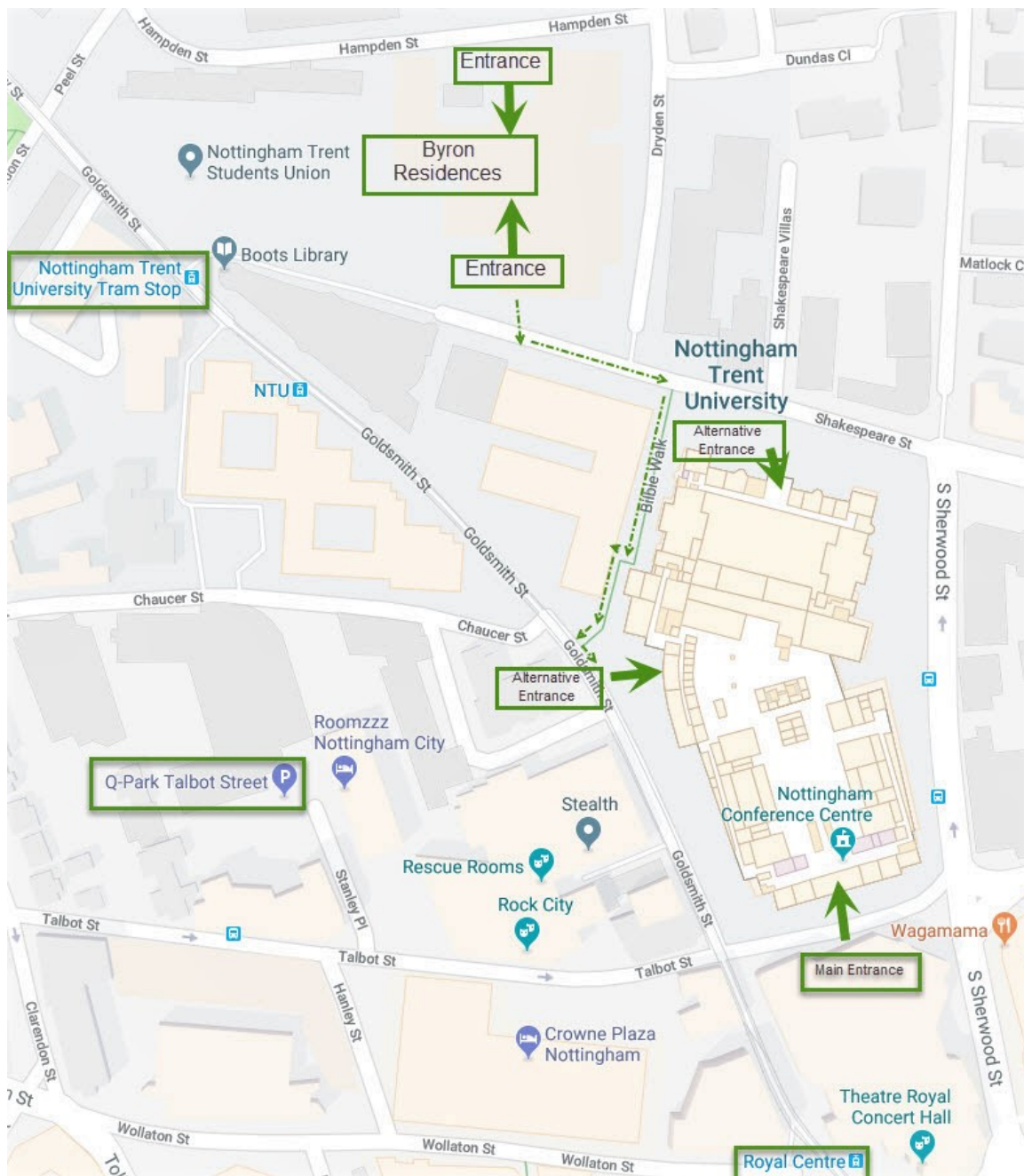
Gala Dinner Menu
Starter
Mature Davidstow Cheddar and Caramelised Onion Tart (v) <i>With apple and celery salad & chive yoghurt dressing</i>
Main
Shin Daube of Derbyshire Beef <i>Cooked in a red wine and rosemary sauce with baby onions and mushrooms served with sweet potato mash & fresh vegetables</i>
Mushroom, Spinach and Stilton Wellington (v) <i>With gratin potatoes, roasted root vegetables, peppered spinach and a mushroom jus</i>
Dessert
Passionfruit mousse (v) <i>With forest berries, crème fraiche and shortbread biscuit</i>
Coffee

If you would like the vegetarian option or have any special dietary requirements please let us know ASAP otherwise we will order the beef main course for you.

There is no official dress code for the Gala Dinner.

Yours sincerely,

Emma Davey
Events Coordinator
JCT Consultancy Ltd



JCT Symposium 2018 – Itinerary

Nottingham Conference Centre / Nottingham Trent University



The itinerary of all the events during the Symposium is given below, please ensure your booking confirmation includes all meals and accommodation you require. All accommodation enquiries will be handled by Byron Residences.

Monday 10th September

19:00 **Meet & Eat** starting at the Slug & Lettuce, The Corner house, Forman Street, Nottingham, NG1 4DB

Tuesday 11th September

07:30 – 09:00	Breakfast in the Old Chemistry Theatre
10:00 – 10:30	MOVA User Group Registration & Coffee in Newton Forum Level 1
10:30 – 12:00	MOVA User Group in Lecture Theatre 4
12:00 – 13:00	Lunch in Newton Forum Level 1
13:00 – 14:15	MOVA User Group Continues in Lecture Theatre 4
14:15 – 14:30	Refreshments with Tea & Coffee in Newton Forum Level 1
14:30 – 16:00	MOVA User Group final session in Lecture Theatre 4
19:00	BBQ Evening Sponsored by Aldridge Traffic in the Old Chemistry Theatre

Following the meal the Bar will remain open and will be sponsored by Swarco, NAL, Dynniq, Coeval, TRP Products, ARTSM and JCT.

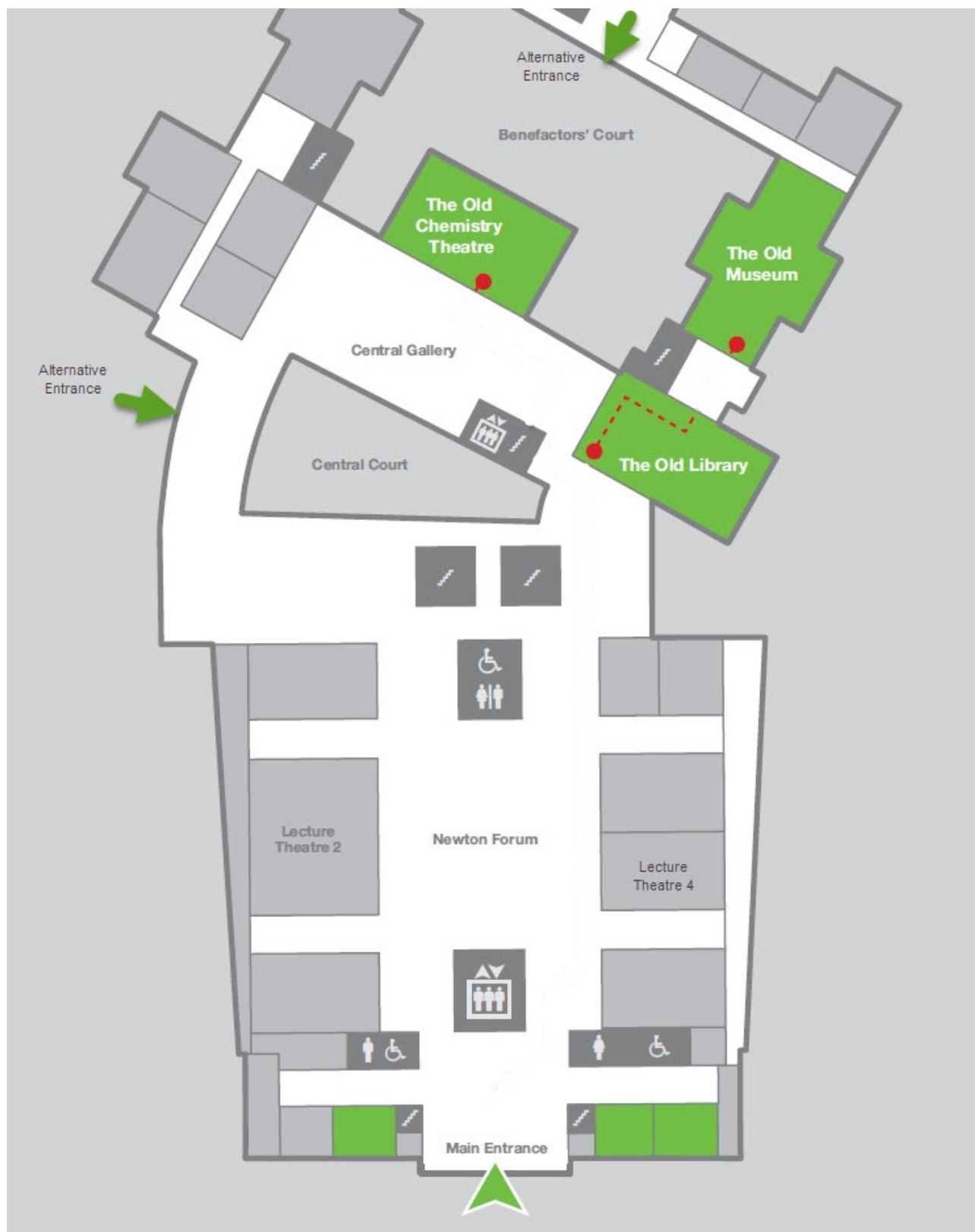
Wednesday 12th September

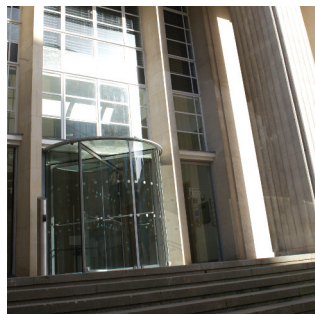
07:30 – 09:00	Breakfast in Central Gallery
08:30 – 09:20	Symposium Registration in Newton Forum Level 0 at the JCT Stand
09:30 – 10:30	Symposium Session 1 in Lecture Theatre 2
10:30 – 11:00	Refreshments & Exhibition in Newton Forum Level 0
11:00 – 12:30	Symposium Session 2 in Lecture Theatre 2
12:30 – 14:00	Buffet Lunch & Exhibition in Newton Forum Level 0
14:00 – 15:30	Symposium Session 3 in Lecture Theatre 2
15:30 – 16:00	Refreshments & Exhibition in Newton Forum Level 0
16:00 – 17:30	Symposium Session 4 in Lecture Theatre 2
18:30 – 19:00	Reception Drinks Sponsored by Swarco Traffic in Central Court
19:00	Gala Dinner Sponsored by Siemens in Central Gallery

Following the Gala Dinner the Bar will remain open and will be sponsored by Swarco, NAL, Dynniq, Coeval, TRP Products, ARTSM and JCT.

Thursday 13th September

07:30 – 09:00	Breakfast in Central Gallery
08:30 – 09:00	Symposium Registration in Newton Forum Level 0 at the JCT Stand
09:15 – 10:30	Symposium Session 5 in Lecture Theatre 2
10:30 – 11:00	Refreshments & Exhibition in Newton Forum Level 0
11:00 – 12:30	Symposium Session 6 in Lecture Theatre 2
12:30 – 14:00	Buffet Lunch & Exhibition in Newton Forum Level 0
14:00 – 16:00	Symposium Session 7 in Lecture Theatre 2





Directions to Nottingham Conference Centre

By rail

Nottingham Station is the mainline train station close to Nottingham city centre. The train station is a 15 minute walk from Nottingham Conference Centre, but for those new to the city it might be easier to take a taxi or use Nottingham's tram NET (Nottingham Express Transit) system.

Directions to the station tram stop are signposted throughout the train station building. The Conference Centre is located between the Royal Centre and Nottingham Trent University tram stop. Take a tram heading to either Phoenix Park or Hucknall. Exit the tram at the Royal Centre, continue down Goldsmith Street taking the first right turn onto Burton Street where you will find the Nottingham Conference Centre entrance on the left.

By air

The closest airport to Nottingham is East Midlands Airport which is 15 miles (approximately 24 kilometres) outside of the city. It takes about half an hour from there to travel into the city by car or bus. There is a Skylink bus service that runs every half hour from the airport into Nottingham city centre and stops a few minutes walk away from Nottingham Conference Centre.

By car

From the north, exit the M1 at junction 26 and follow the signs for the A610 towards Nottingham city centre.

There is a Park and Ride (tram) facility situated close to the M1 junction 26. The Park and Ride (Phoenix Park) site is clearly sign-posted off the A610.

Leave the tram at the Nottingham Trent University tram stop which is located on Goldsmith Street and walk past the main University entrance, turn left on to Burton Street where you will find the Nottingham Conference Centre entrance.

From the south, exit the M1 at junction 24 and follow the signs for the A453 to Nottingham city centre.

The Queen's Drive Park and Ride is located just off the A453 (Queen's Drive), follow signs for A453 / Queen's Drive Industrial Estate and merge on to the A453 (Queen's Drive). The Park and Ride is located on the opposite side of the road to the retail park and is clearly sign-posted.

Alight from the Park and Ride bus on Lower Parliament Street (Victoria Centre); Nottingham Conference Centre is a short walk away.

Car parking

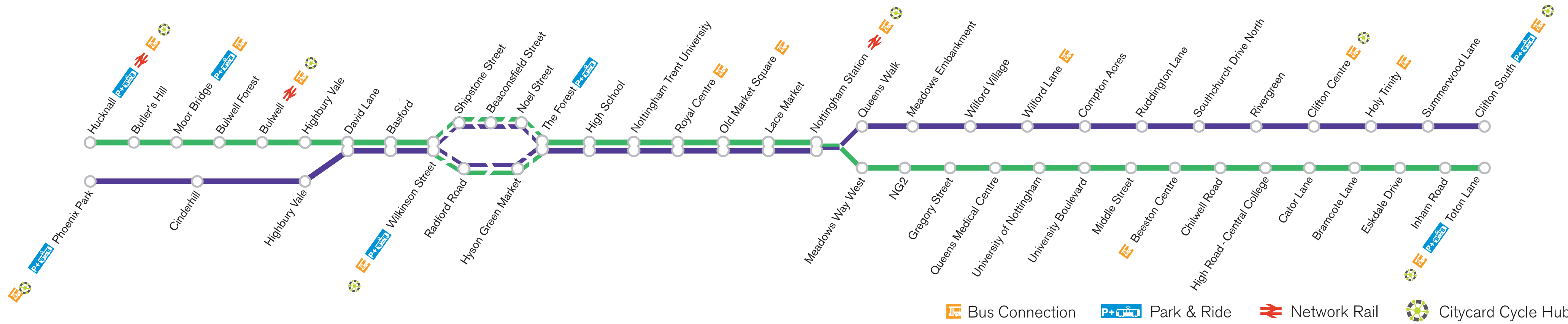
Car parks in the city centre are clearly signposted from all major approach routes.

There are two car parks close to Nottingham Conference Centre, Trinity Square car park on North Church Street and Talbot Street car park. For satellite navigation systems please use the following information:

Trinity Square car park: postcode NG1 4BR
co-ordinates 52.956785,-1.149316

Talbot Street car park: postcode NG1 5GG
co-ordinates 52.956143,-1.154433





Please fill in your details below.

NAME

EVENT NAME:

DATE ATTENDING:

This voucher entitles you to travel on NET Trams for just £2 return with the purchase of an Event Ticket.

How to use: Select the "Event Ticket" option at any Tram ticket machine on the network. If requested by Tram staff, this voucher must be shown in conjunction with the event ticket to qualify for the offer. Please note that failure to do so may result in a penalty fare.

Free parking is available in our 7 Park and Ride sites across the city. For more information, including journey planning, please visit www.thetram.net



NOTTINGHAM EXPRESS TRANSIT



#FirstToKnow. Scan above to sign up to our mailing list for more offers!

Get in touch...

0115 942 7777
info@thetram.net

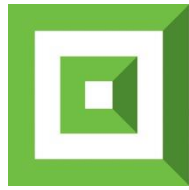
Travel Centre
4 King Street
Nottingham
NG1 2AS



@NETTram



/thetram.net



Nottingham Conference Centre

Free Wi-Fi Available

To access the Wi-Fi:

- Connect to the wireless network **ntu-guest** or **Nottingham Conference Centre**
- If you use a tablet or mobile device you will be taken to the acknowledgment screen below
- If you use a laptop, once you navigate to a web page you will be re-directed to the page below



Welcome to the NTU Guest Wireless Service

Accessing the NTU Guest Network From Your Wireless Device - Terms of Use

NTU provides a Wireless Internet Access for Guests ("the Service"). By using the Service, you accept and acknowledge that you are subject to and agree to abide by all laws and regulations applicable to Internet use. NTU staff and students are not permitted to use this service.

Terms and Conditions of Use - NTU accepts no responsibility for the safety of a Guest's equipment. Guests must provide a valid email address to use the service.

Security Considerations - As with most guest wireless networks, any information being sent or received over the NTU wireless network could potentially be intercepted by another wireless user. You should not transmit any sensitive or personal information whilst using this wireless service. As a user of the Service, you agree to hold harmless NTU and its employees for any personal information that is compromised, or for any damage caused to your hardware or software due to electric surges, security issues or consequences caused by viruses or hacking. All Guest users should have up-to-date virus protection on their device, as well as staying up-to-date with applicable OS security patches.

Disclaimer - NTU provides the Service to you as a Guest and offers no guarantees that any use of the wireless connection is in any way secure, or that any privacy can be protected when using this wireless connection. Use of this Service is entirely at your risk as the user, and NTU is not responsible for any loss of any information that may arise from the use of the Service.

Agreement - By entering "Accept" below, you are agreeing to the terms above.

Enter Your Email Address*

(* mandatory - your email address will NOT be used for marketing purposes)

- You will be required to enter your email address and click Accept (accepting the T&Cs) and that's it. Only NTU Guest requires an email address.
- The email address is only used for capturing session information for auditing purposes. It is not used for marketing purposes.

If you experience any problems connecting to the Wi-Fi, please contact the Conference Centre Reception as soon as possible so that we can look to resolve this for you.